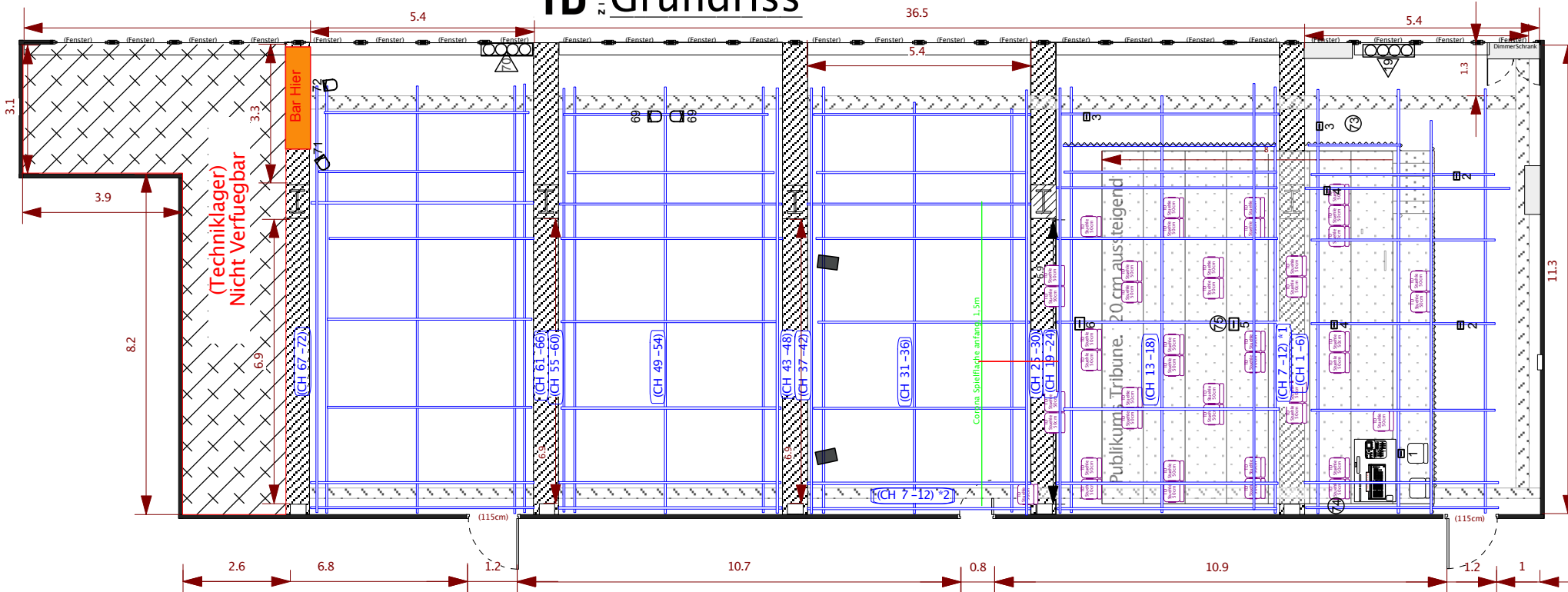
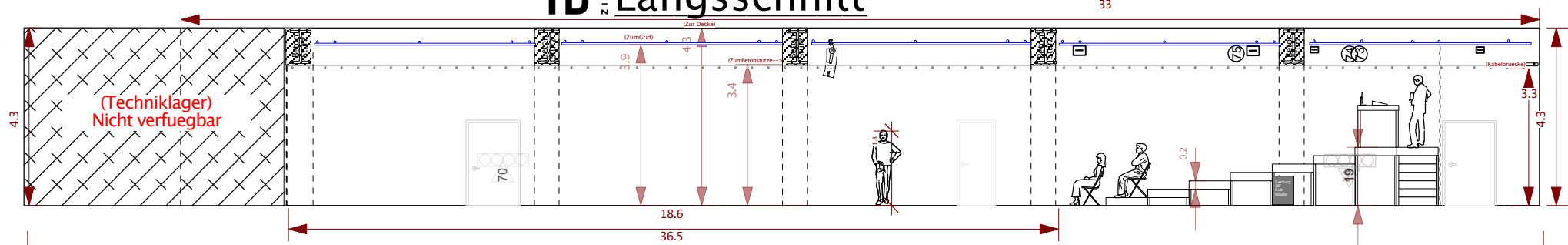


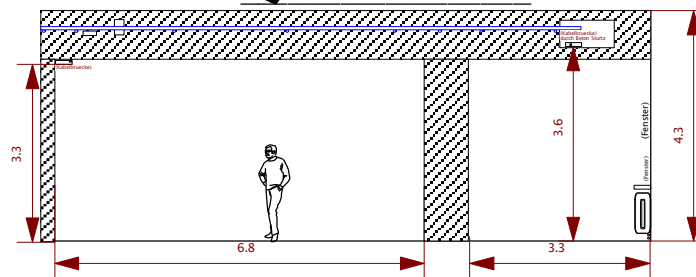
TD Grundriss



TD Längsschnitt



TD Querschnitt



TD Beleuchtung Grundinventar:	
JB Lighting P12 (4x)	(640 W) 2x
ADP Fresnel F101, 13-53° (1 kW)	24x
ADP PC C103, 13-60° (1 kW)	9x
Source 4 Zoom, 25-50° (575 W)	4x
Source 4 Jr. zoom, 25-50° (575 W)	4x
ADP Warp Profiler, 12-30° (800W)	4x
Niethammer HPS 100, 23° (1 kW)	6x
LED Par, Sparvillenscheinwerfer	7x
LED Par, Sparvillenscheinwerfer	7x
Par 64 Long Nose (1 kW)	14x
Par 64 Short Nose (1 kW)	12x
Par 56 (500W)	8x
Pinspot, Par 36 (30W)	14x
Fluter, Ultralight Cyclo 1000(1 kW)	6x
Showtech Strip (700W)	3x
Leuchtstoff Rohr, 1,2m	10x
ADB Svoboda 9 Kammer (2250W)	2x

Beamer Inventar:	
PT M2770 (8000 Lumin)	1x
PT VX 600 (5500 Lumin)	2x

Boden zum Kabelbrücke (R) = 360 cm
 Boden zum Sturz = 339 cm
 Boden zur Decke = 427 cm
 Boden zum Kabelkanal (L) = 329 cm

Sitzpläetze: Flexible; bis zu 104 (44)

TD	